

Analysis of Overhead in Dynamic Java Performance Monitoring

Vojtěch Horký, Jaroslav Kotrč, Peter Libič and Petr Tůma

Charles University in Prague



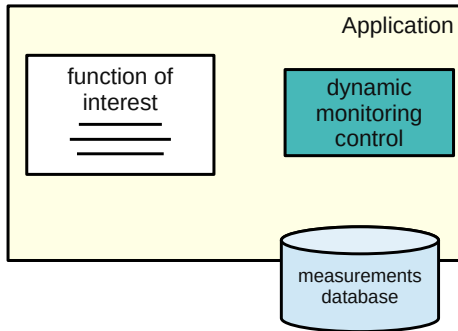
Context: Dynamic Monitoring of Production Systems

Dynamic Monitoring of Production Systems

Measurement probes are active only when needed,
measuring everything all the time might not be practical.

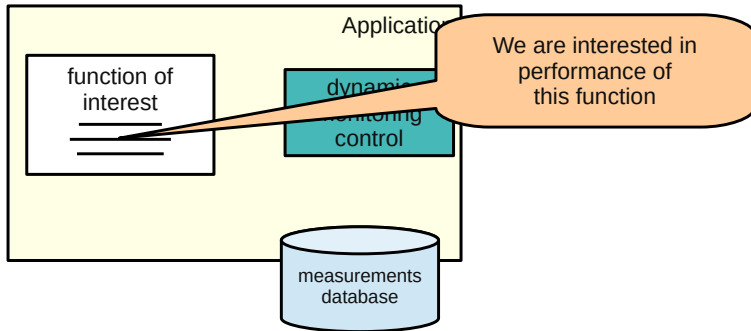
Dynamic Monitoring of Production Systems

Measurement probes are active only when needed, measuring everything all the time might not be practical.



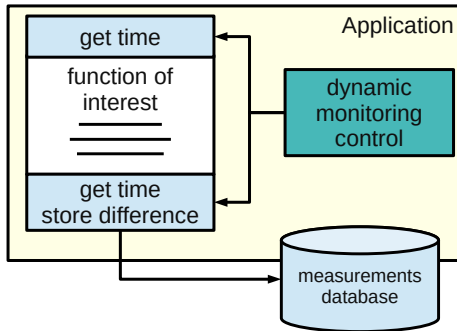
Dynamic Monitoring of Production Systems

Measurement probes are active only when needed, measuring everything all the time might not be practical.



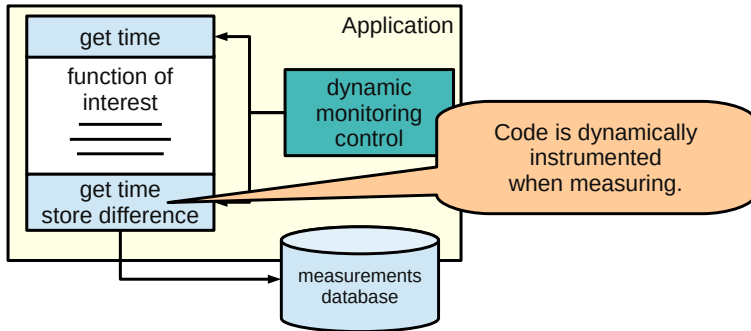
Dynamic Monitoring of Production Systems

Measurement probes are active only when needed, measuring everything all the time might not be practical.



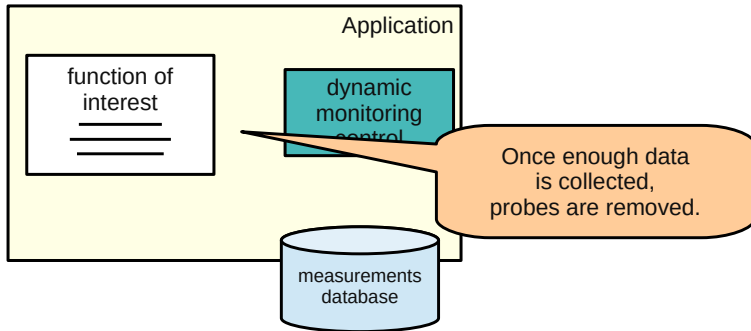
Dynamic Monitoring of Production Systems

Measurement probes are active only when needed, measuring everything all the time might not be practical.



Dynamic Monitoring of Production Systems

Measurement probes are active only when needed, measuring everything all the time might not be practical.



Issues of Dynamic Monitoring

In managed environments, code is compiled at run-time;
probe insertion (removal) causes recompilation.

Monitored application can thus behave differently.

Issues of Dynamic Monitoring

In managed environments, code is compiled at run-time; probe insertion (removal) causes recompilation. Monitored application can thus behave differently.

Interesting Questions

How do the code manipulations affect the application?

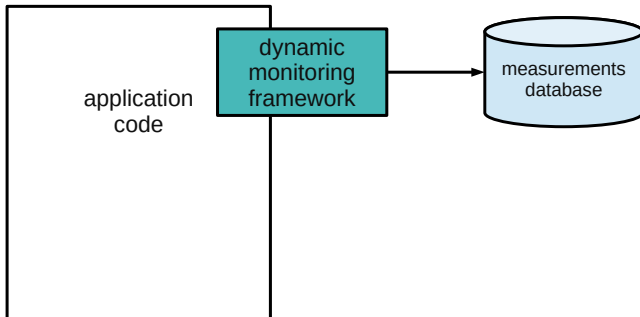
What is the overhead of such probe?

Is the observed performance representative?

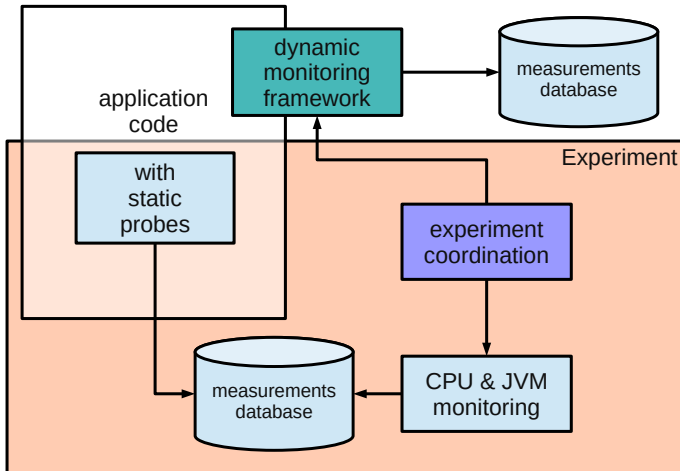
Is there zero overhead once the probe is removed?

Experiment Setup

Experiment Coordination



Experiment Coordination



Two Measurement Infrastructures

Self-measurement

Dynamic monitoring

Two Measurement Infrastructures

	Self-measurement	Dynamic monitoring
Performance	Baseline	“Observed”

Two Measurement Infrastructures

	Self-measurement	Dynamic monitoring
Performance	Baseline	“Observed”
Location	Method entry and exit points (both)	

Two Measurement Infrastructures

	Self-measurement	Dynamic monitoring
Performance	Baseline	“Observed”
Location	Method entry and exit points (both)	
Instrumentation	Static	Dynamic (run-time)

Two Measurement Infrastructures

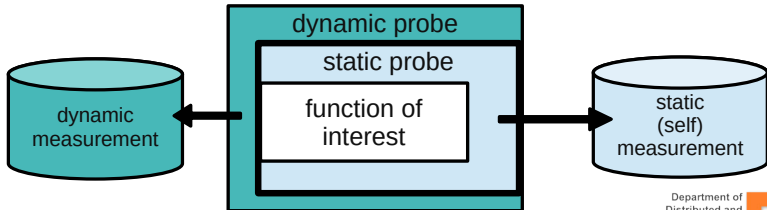
	Self-measurement	Dynamic monitoring
Performance	Baseline	“Observed”
Location	Method entry and exit points (both)	
Instrumentation	Static	Dynamic (run-time)
Data collection	Continuous	On demand

Two Measurement Infrastructures

	Self-measurement	Dynamic monitoring
Performance	Baseline	“Observed”
Location	Method entry and exit points (both)	
Instrumentation	Static	Dynamic (run-time)
Data collection	Continuous	On demand
Implementation	Native method (in C)	Pure Java

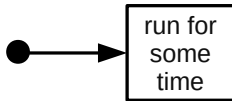
Two Measurement Infrastructures

	Self-measurement	Dynamic monitoring
Performance	Baseline	“Observed”
Location	Method entry and exit points (both)	
Instrumentation	Static	Dynamic (run-time)
Data collection	Continuous	On demand
Implementation	Native method (in C)	Pure Java

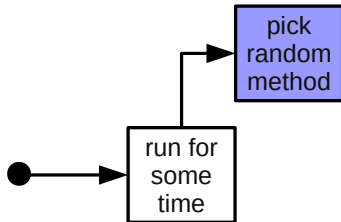


Experiment Process

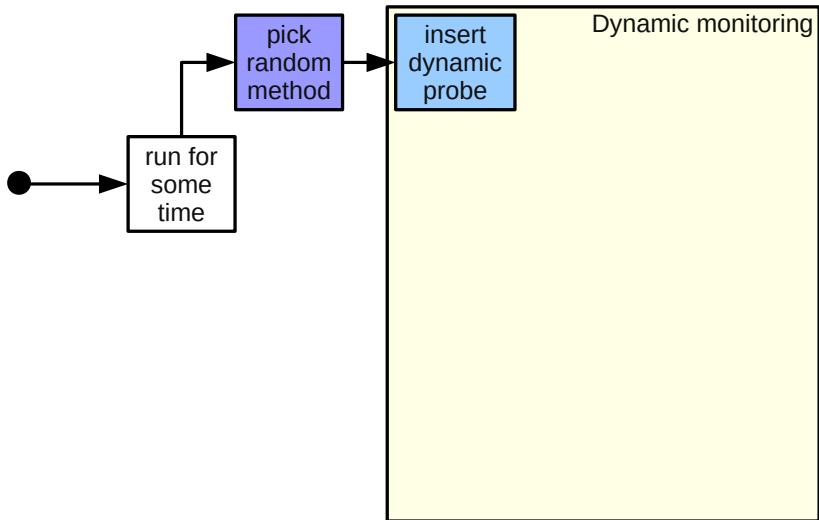
Experiment Process



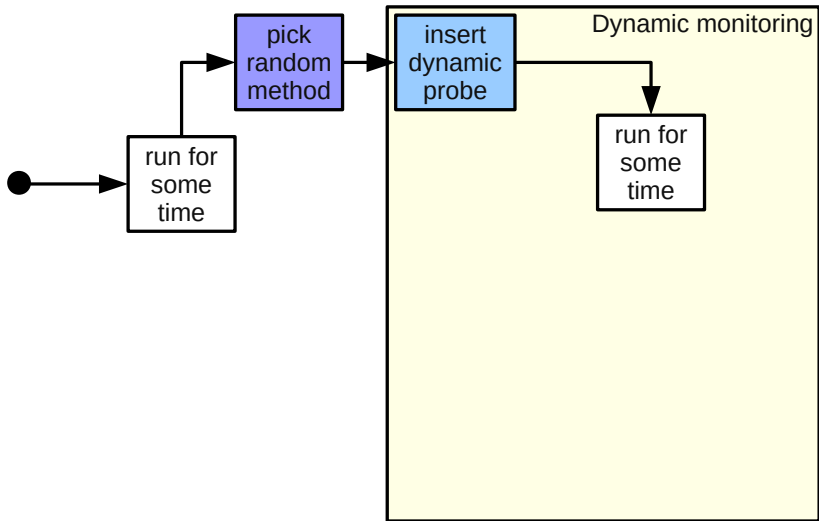
Experiment Process



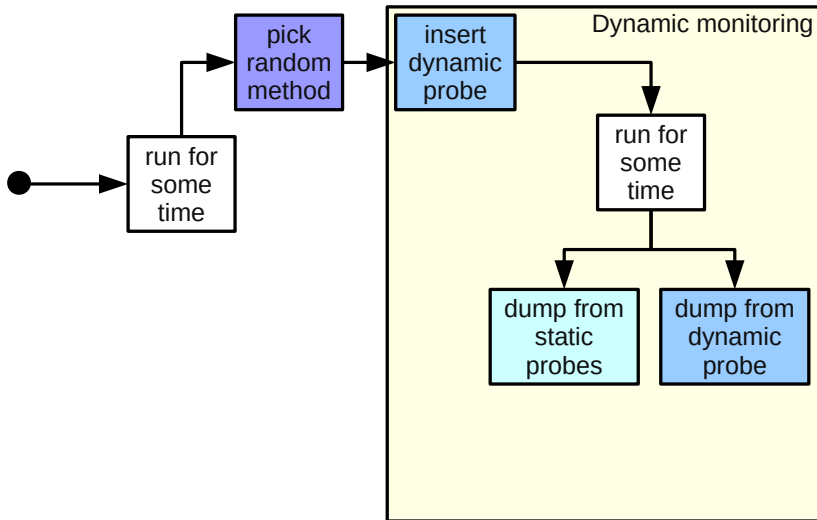
Experiment Process



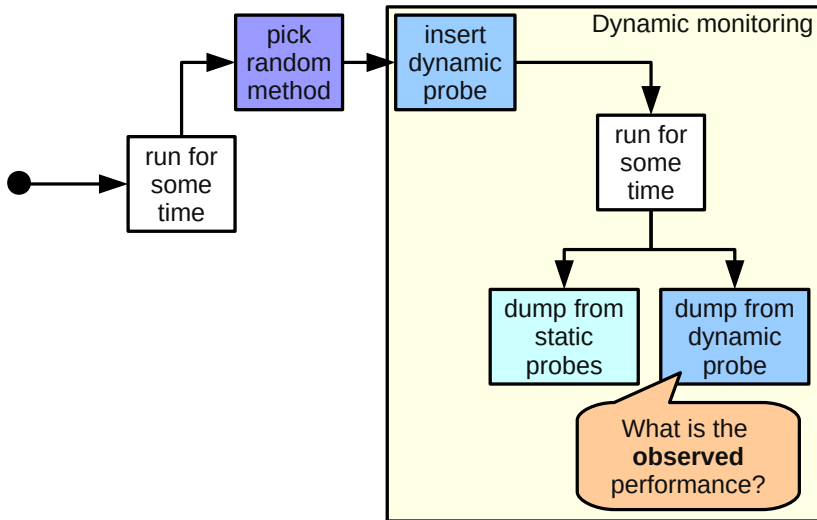
Experiment Process



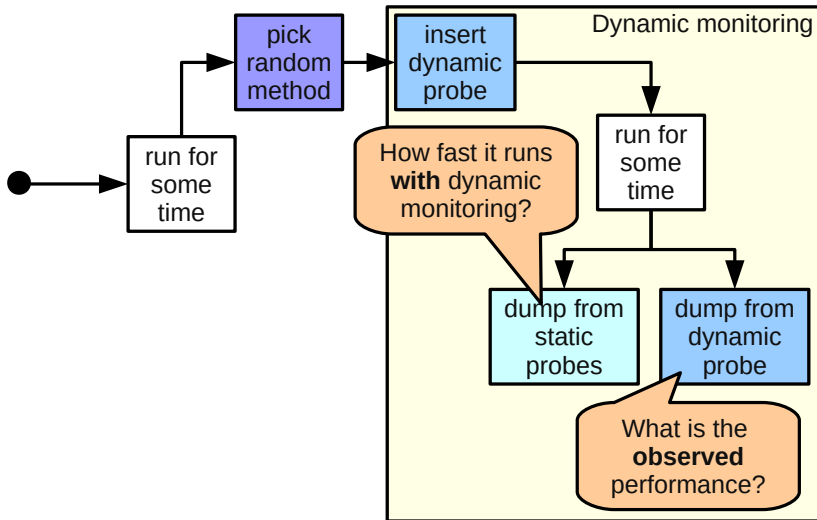
Experiment Process



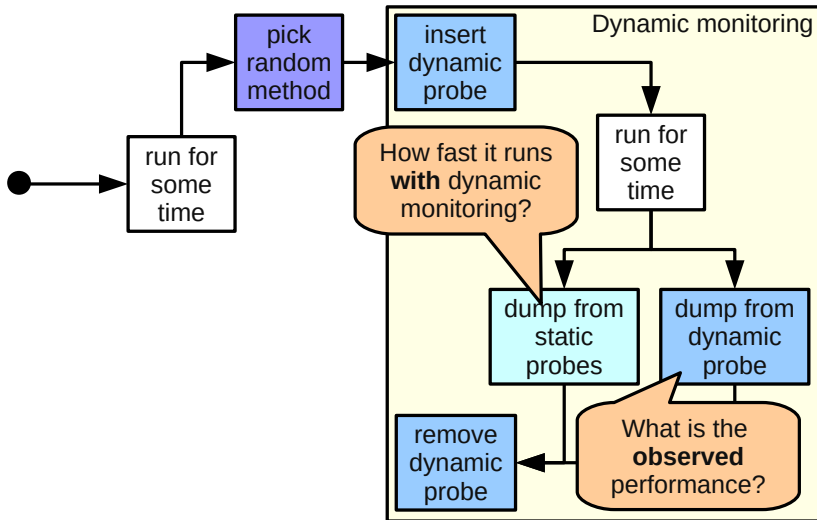
Experiment Process



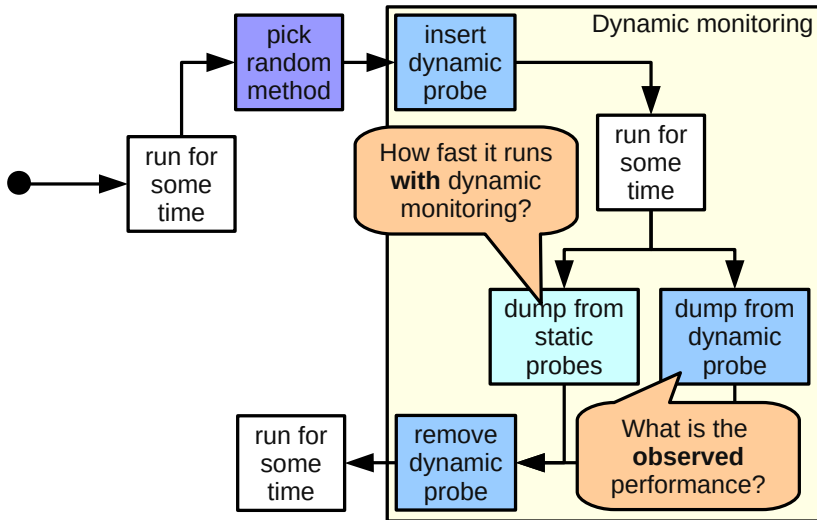
Experiment Process



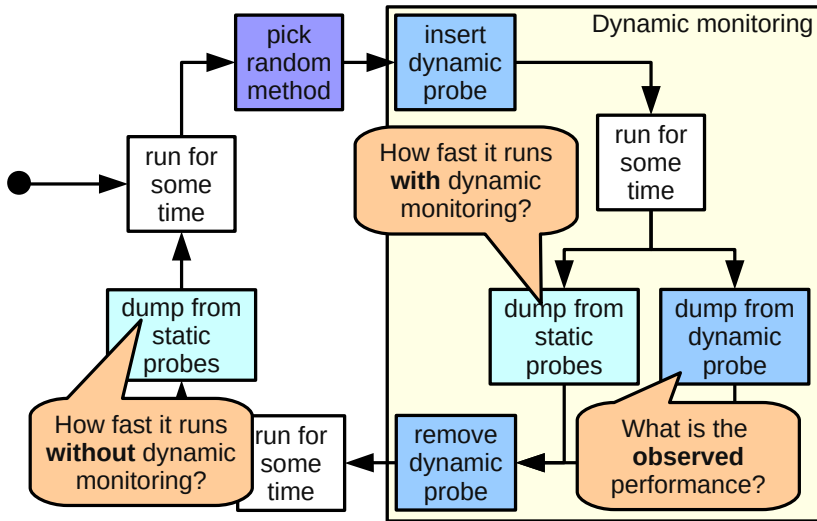
Experiment Process



Experiment Process



Experiment Process



Platform and Application Details

Platform and Application Details

- Hardware: 32 CPUs, 2 NUMA nodes, 48G RAM.

Platform and Application Details

- Hardware: 32 CPUs, 2 NUMA nodes, 48G RAM.
- SPECjbb2015 augmented with static probes.
 - Fixed request rate 4 000 reqs/s.
(Close to maximum with static probes on our hardware.)
- Over 1 200 monitored methods.
 - Business code of the benchmark.
 - Practically all methods called frequently enough.
 - About one minute of dynamic monitoring per method.

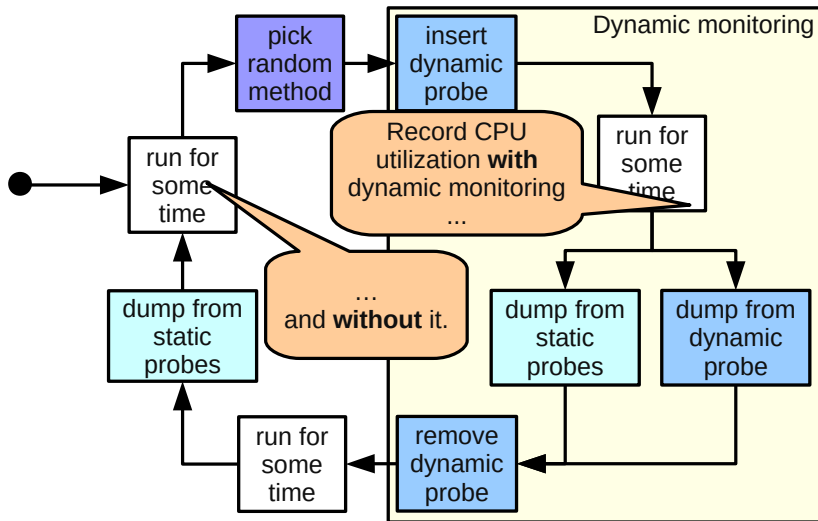
Platform and Application Details

- Hardware: 32 CPUs, 2 NUMA nodes, 48G RAM.
- SPECjbb2015 augmented with static probes.
 - Fixed request rate 4 000 reqs/s.
(Close to maximum with static probes on our hardware.)
- Over 1 200 monitored methods.
 - Business code of the benchmark.
 - Practically all methods called frequently enough.
 - About one minute of dynamic monitoring per method.
- Several TBs of raw data per week of run-time.

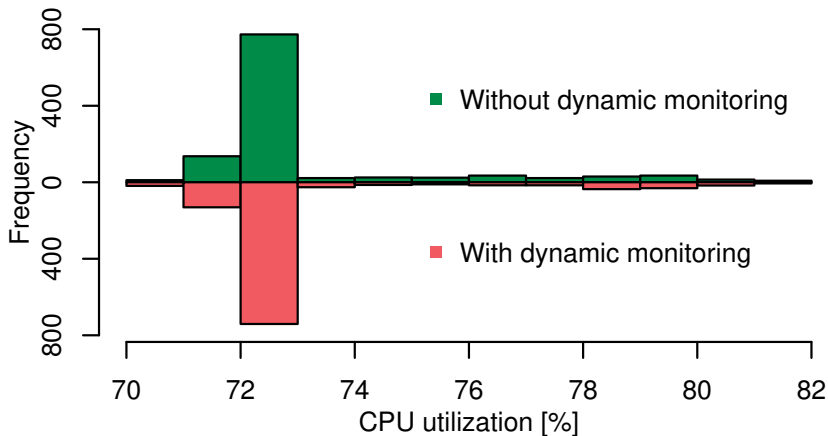
Results

Overall Overhead of Dynamic Monitoring

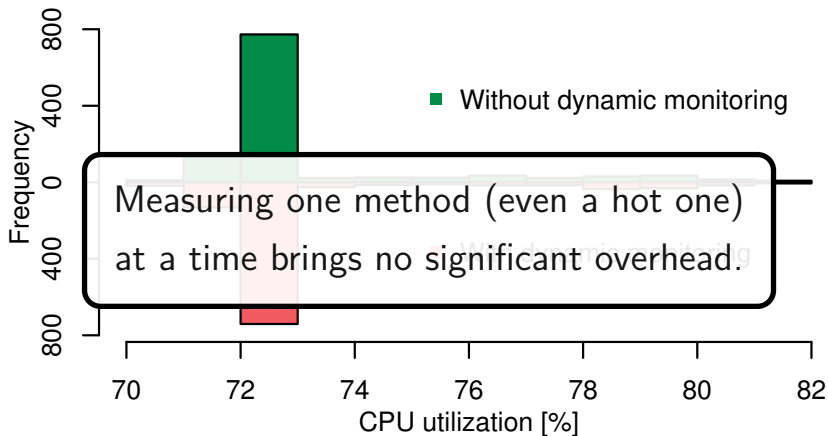
Overall Overhead of Dynamic Monitoring



Overall Overhead of Dynamic Monitoring

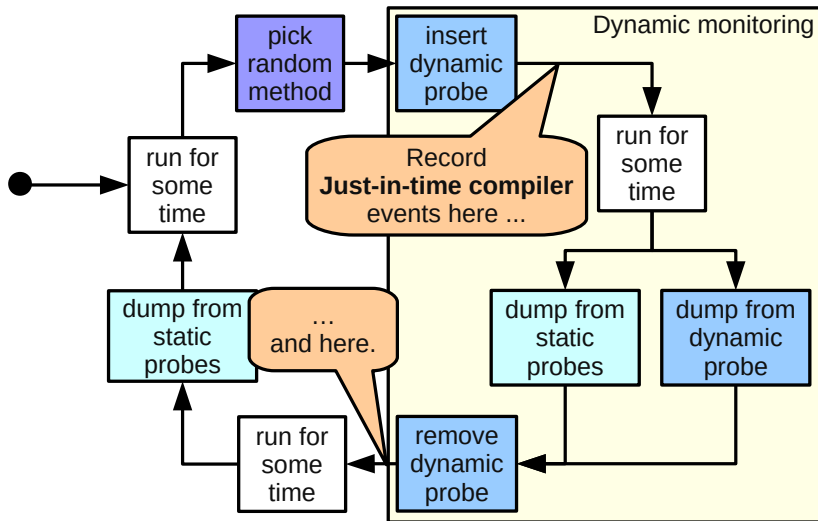


Overall Overhead of Dynamic Monitoring

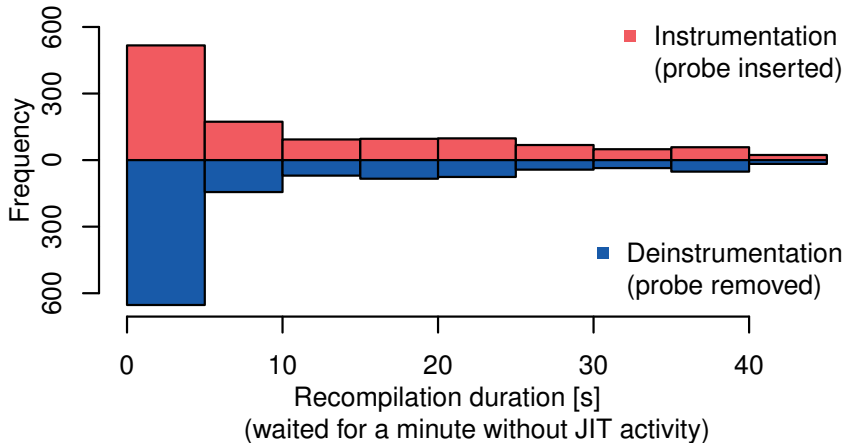


Time Needed for Just-in-time Recompilation

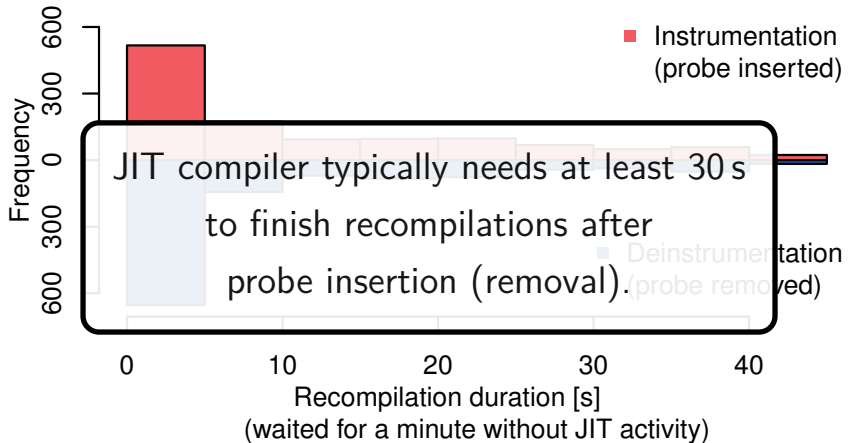
Time Needed for Just-in-time Recompilation



Time Needed for Just-in-time Recompilation

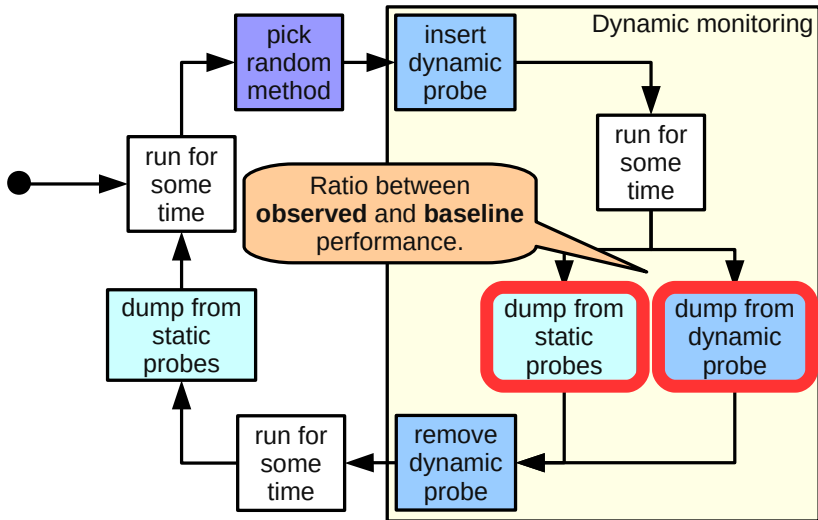


Time Needed for Just-in-time Recompilation

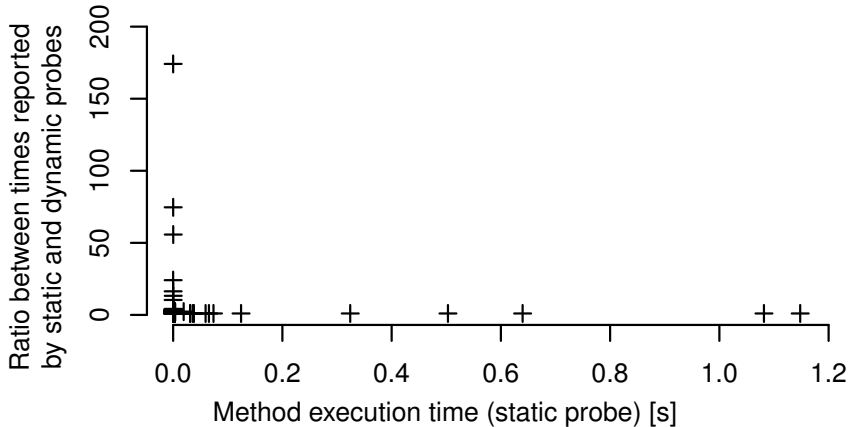


Accuracy of Collected Data

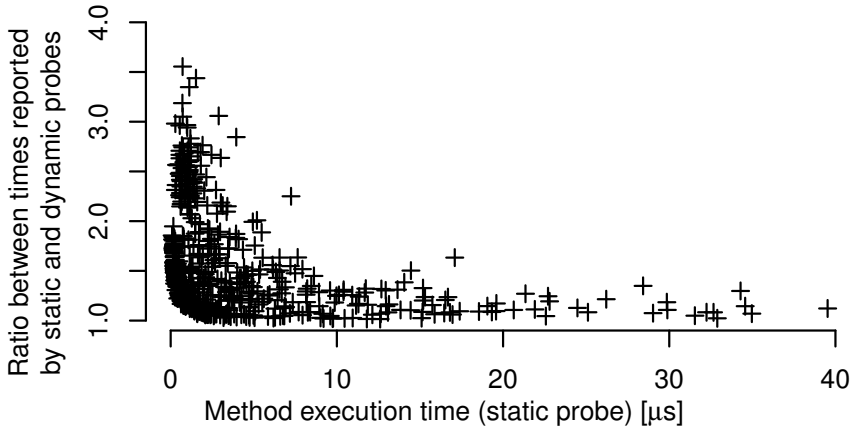
Accuracy of Collected Data



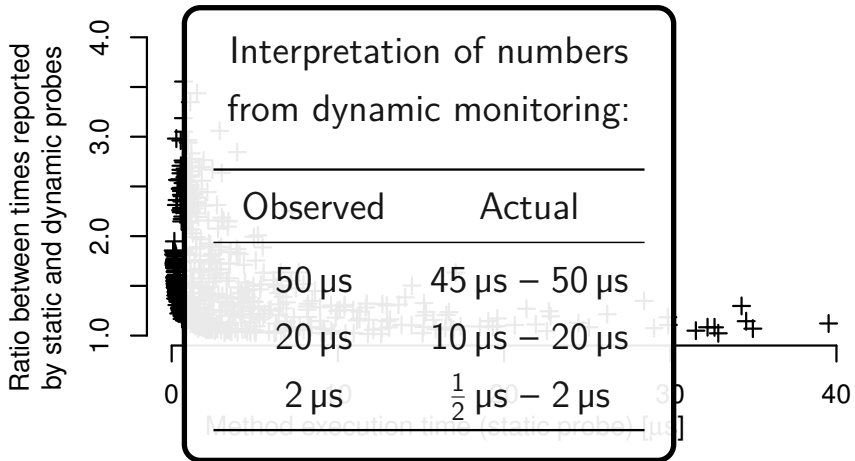
Accuracy of Collected Data



Accuracy of Collected Data

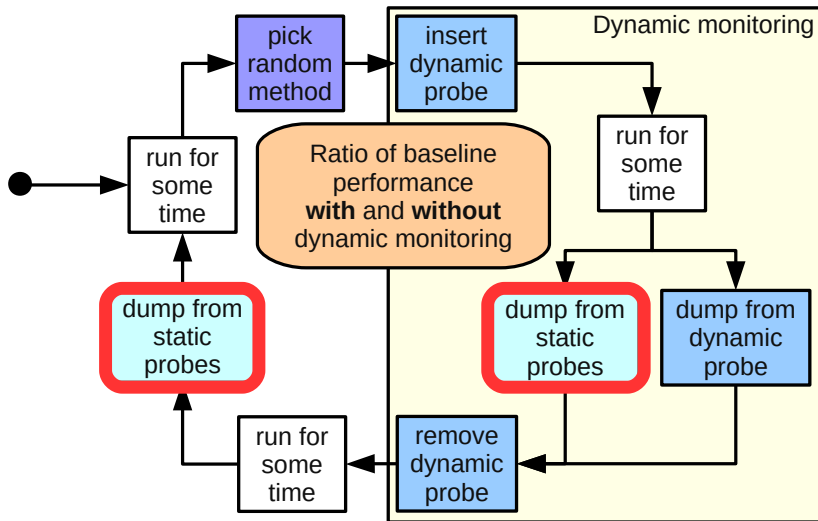


Accuracy of Collected Data

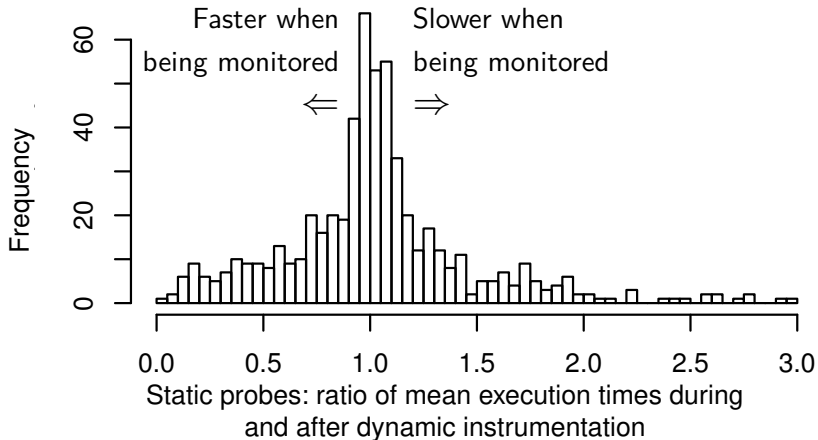


Impact of Dynamic Monitoring

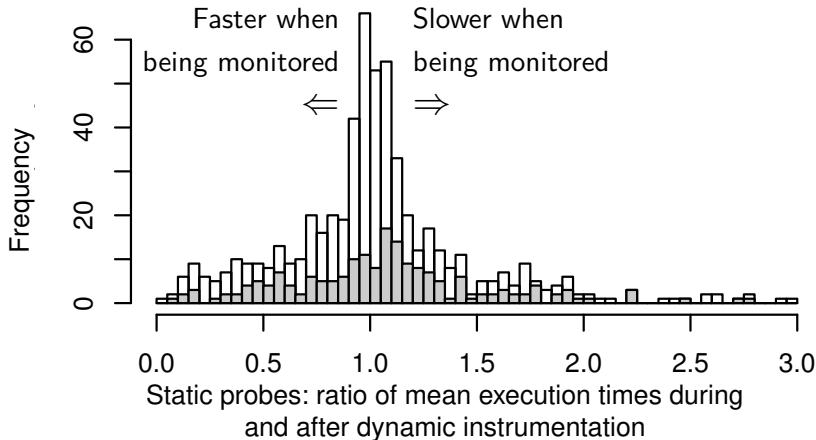
Impact of Dynamic Monitoring



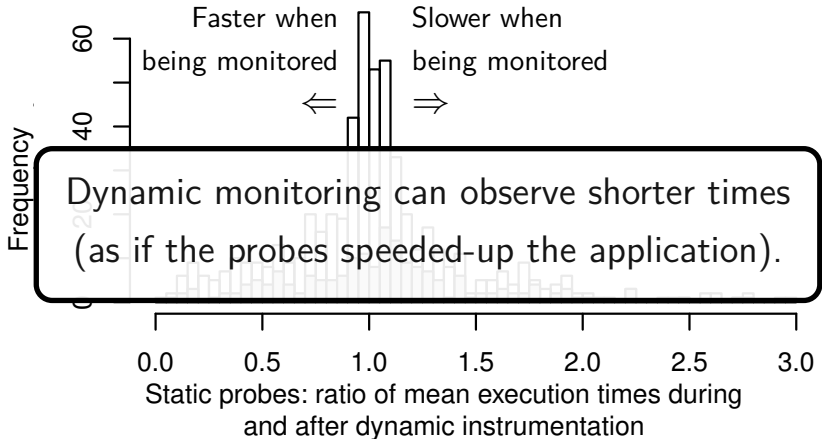
Impact of Dynamic Monitoring



Impact of Dynamic Monitoring



Impact of Dynamic Monitoring



Conclusion

Analysis of Overhead in Dynamic Java Performance Monitoring

We evaluated how dynamic monitoring affects a running application and what is the accuracy of the obtained data.

Analysis of Overhead in Dynamic Java Performance Monitoring

We evaluated how dynamic monitoring affects a running application and what is the accuracy of the obtained data.

Rules of thumb coming from our experiment . . .

- Measuring one method at a time does not change CPU utilization.
- At least 30 s are needed for (JIT) recompilation.
- If the reported time is 30 μ s . . .
 - . . . the actual duration is between 20 μ s and 40 μ s
(durations of at least 100 μ s are more “trustworthy”, though).

Analysis of Overhead in Dynamic Java Performance Monitoring

We evaluated how dynamic monitoring affects a running application and what is the accuracy of the obtained data.

Rules of thumb coming from our experiment . . .

- Measuring one method at a time does not change CPU utilization.
- At least 30 s are needed for (JIT) recompilation.
- If the reported time is 30 μ s . . .
 - . . . the actual duration is between 20 μ s and 40 μ s
(durations of at least 100 μ s are more “trustworthy”, though).

<http://d3s.mff.cuni.cz/resources/icpe2016>

Analysis of Overhead in Dynamic Java Performance Monitoring

We evaluated how dynamic monitoring affects a running application and what is the accuracy of the obtained data.

Rules of thumb coming from our experiment . . .

- Measuring one method at a time does not change CPU utilization.
- At least 30 s are needed for (JIT) recompilation.
- If the reported time is 30 μ s . . .
 - . . . the actual duration is between 20 μ s and 40 μ s
 - (durations of at least 100 μ s are more “trustworthy”, though).

<http://d3s.mff.cuni.cz/resources/icpe2016>

Thank You!